

Use of Tsunamis'99 Data in Tsunamis Navigator

Tsunamis Navigator product can handle user charts (ADD_INFO) and routes (ROUTE) created in Tsunamis'99.

Unfortunately, the data created in Tsunamis'99 cannot be used in its original form, as the data formats have some significant differences. To solve this problem, Tsunamis Navigator includes a special converter.

This manual describes the main procedures which should be performed by the user for the conversion of ADD_INFO and ROUTE data (created in Tsunamis'99 product) for their further use in Tsunamis Navigator product.

Data formats.

Tsunamis'99:

- ADD_INFO – files with CRA extension.
- ROUTE – files with RTE extension.

Tsunamis Navigator:

- ADD_INFO – files with AI extension.
- ROUTE – files with RT3 extension.

If a user has not performed the data conversion in the process of an upgrade or has never before used Tsunamis'99, the conversion of data (ADD_INFO and ROUTE created in Tsunamis'99) for the further use, can be made as follows.

Unpack "TS99" archive and save its contents to the disk (the recommended path is C:\Transas).

C:\Transas\TS99\

ROUTE\ (files with RTE extension)

ADD_INFO\ (files with CRA extension)

NM.CFG

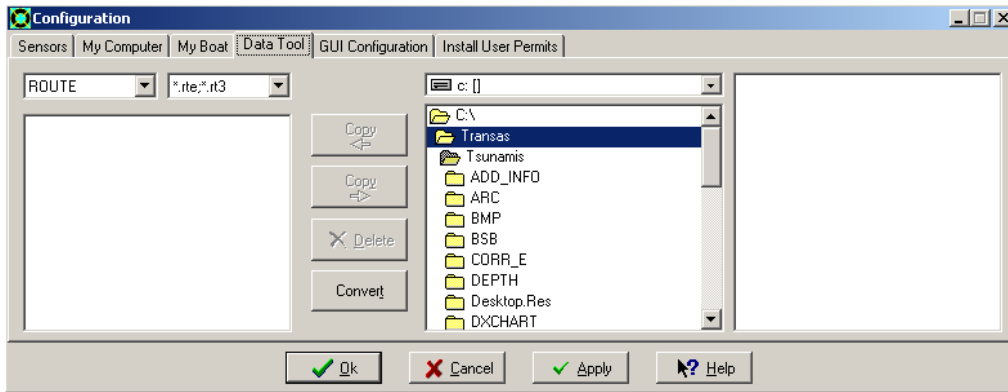
SYMB_EXT.BMP

Save the available data files in the corresponding folder of a new directory (according to the extension).

Described below are data handling stages:

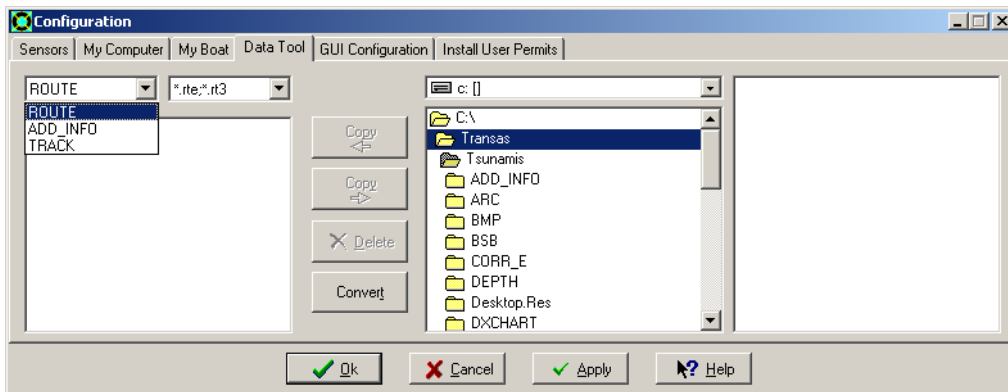
- conversion of routes (ROUTE),
- conversion of user charts (ADD_INFO).

CONVERSION OF ROUTES (ROUTE)

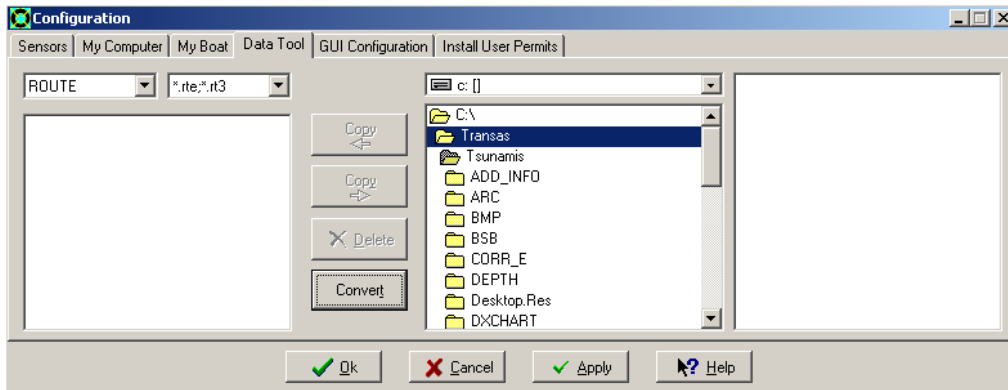


Run Configuration utility and open Data Tool page

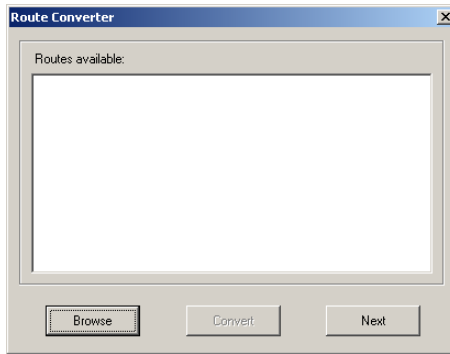
(Start\Programs\Tsunamis Navigator\Configuration\Data Tool).



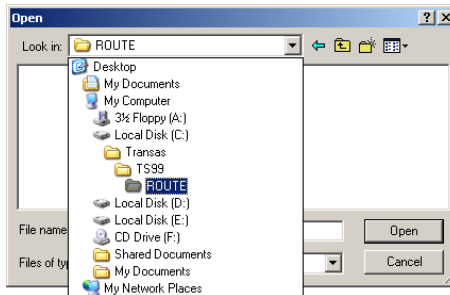
In the left hand panel select "ROUTE" and *.rte, *.rt3.



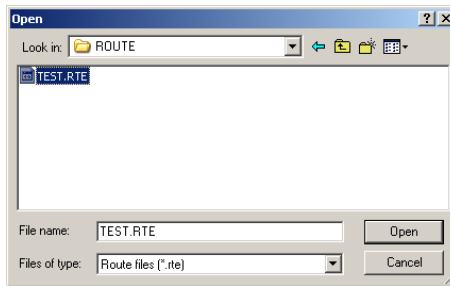
Press "Convert" button.



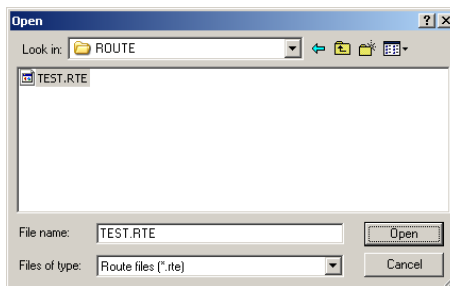
In "Route Converter" window press "Browse" button.



Specify the path and select "ROUTE" folder.

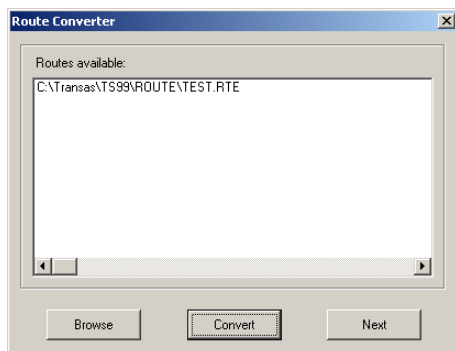


Select the necessary file(s).

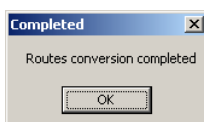


Press "Open" button.

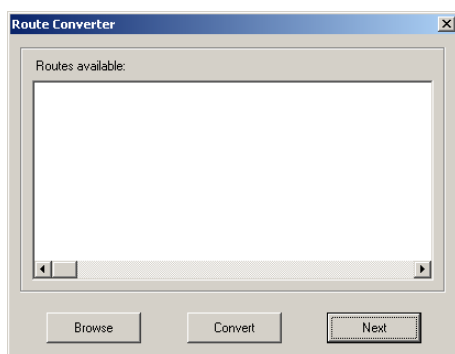
Conversion of routes (ROUTE)



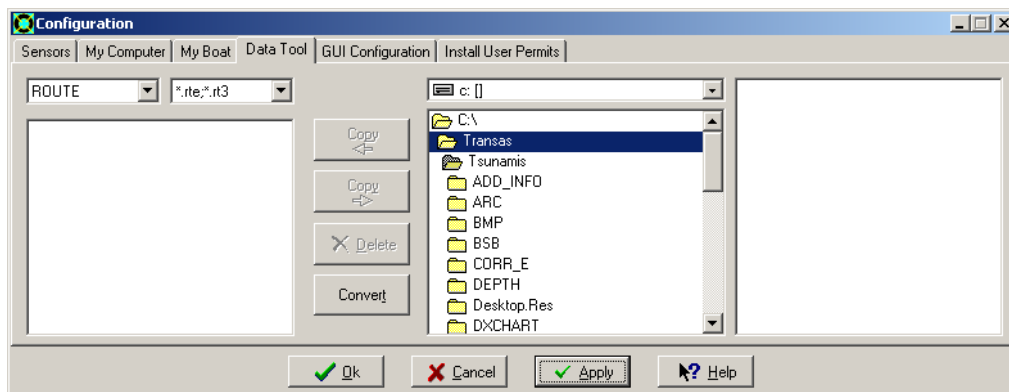
In "Route Converter" window press "Convert" button.



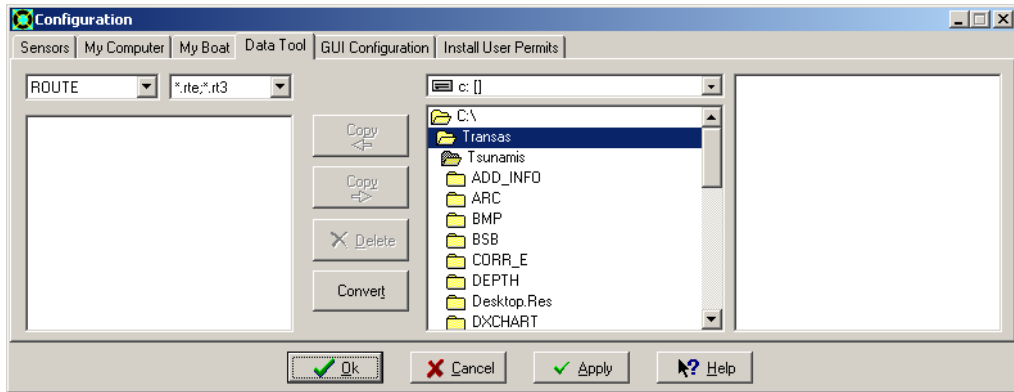
Check that there is "Completed" information window with "Routes conversion completed" message and press "OK" button.



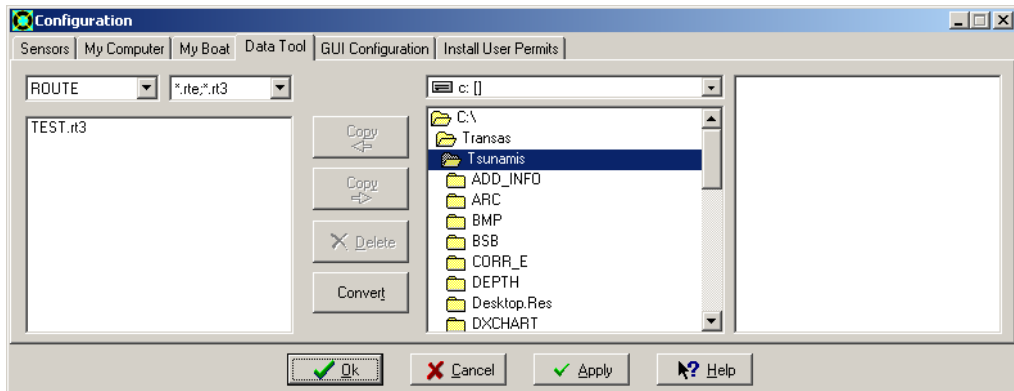
In "Route Converter" window press "Next" button.



Press "Apply" button.

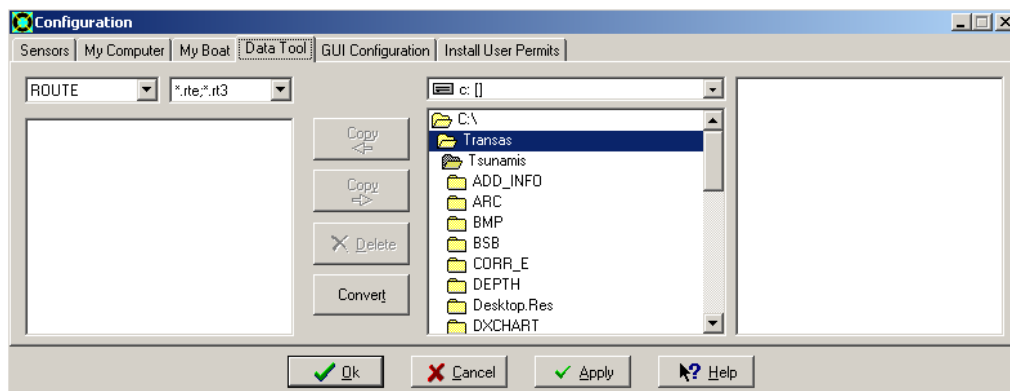


Press "Ok" button.



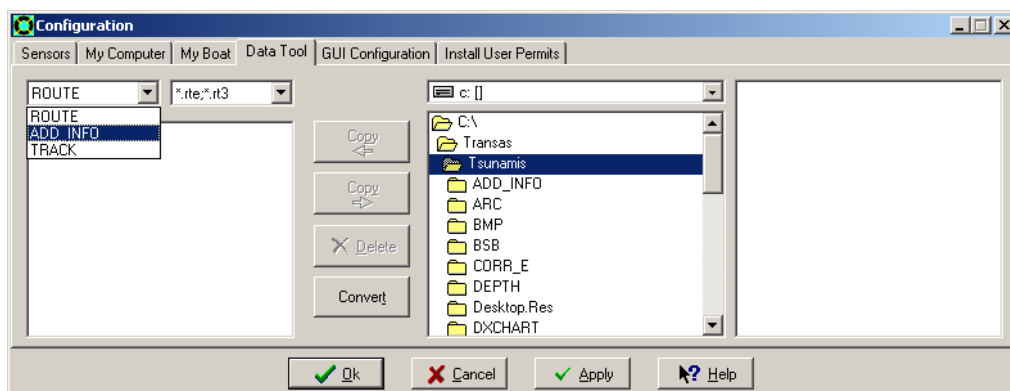
Rerun Configuration utility and check that the converted files are available in the left hand window panel.

CONVERSION OF USER CHARTS (ADD_INFO)

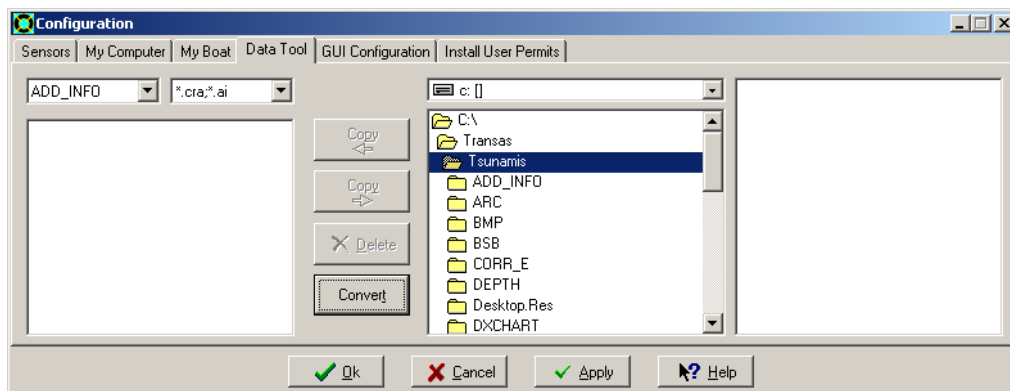


Run Configuration utility and open Data Tool page

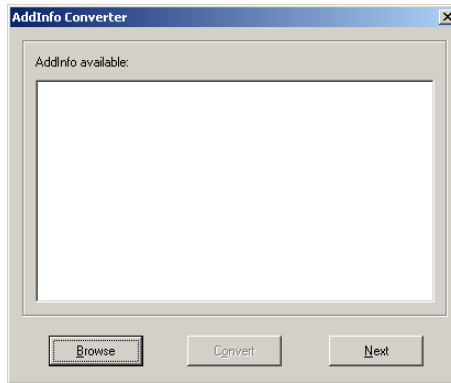
(Start\Programs\Tsunamis Navigator\Configuration\Data Tool).



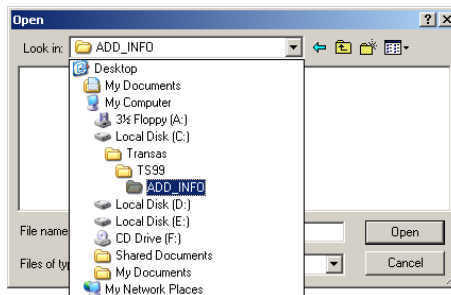
In the left hand panel select "ADD_INFO" and *.cra, *.ai.



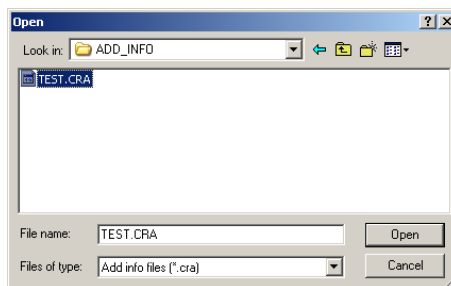
Press "Convert" button.



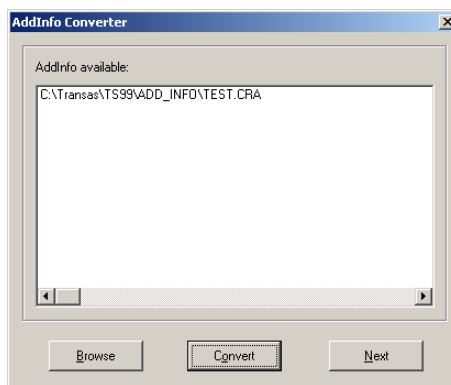
In “AdInfo Converter” window press “Browse” button.



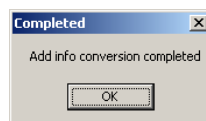
Specify the path and select “ADD_INFO” folder.



Select the necessary file(s).

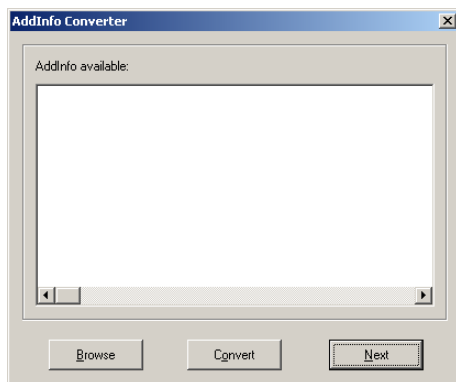


In “AddInfo Converter” window press “Convert” button.

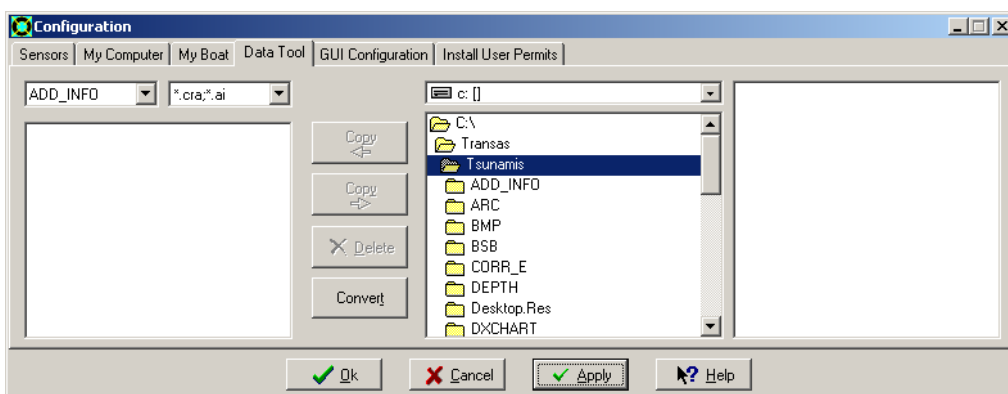


Check that there is “Completed” information window with “Add Info conversion completed” message and press “OK” button.

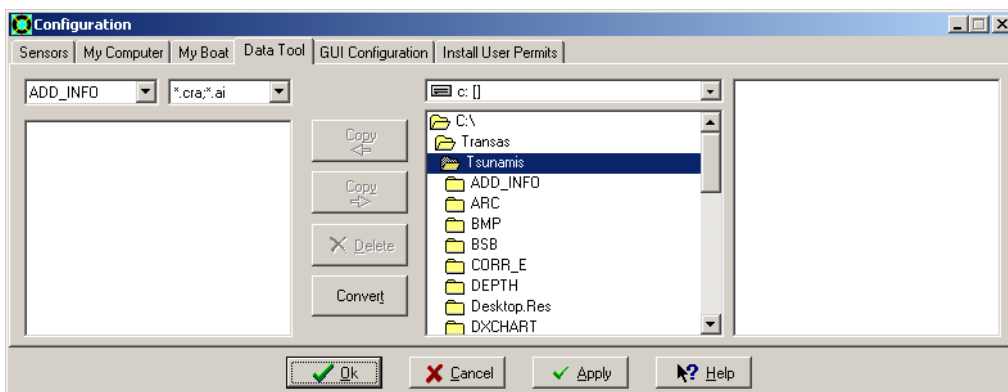
Conversion of User Charts (ADD_INFO)



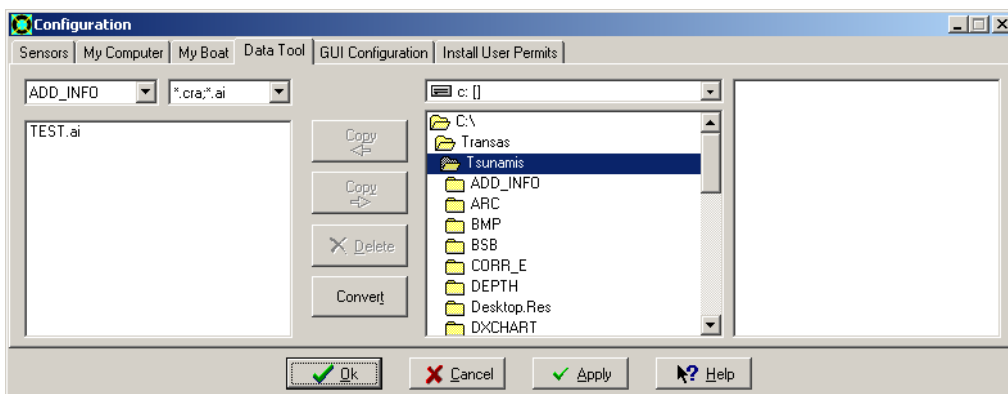
In "AddInfo Converter" window press "Next" button.



Press "Apply" button.



Press "Ok" button.



Rerun Configuration utility and check that there are converted files in the left hand window panel.