

POCKET SAILOR

Installation Guide

Directions for the Installation of "Pocket Sailor" ECS on
Pocket PC Class Mini-Computer.

This document contains:

| | |
|--|-----------|
| Introduction | 4 |
| System Requirements | 4 |
| Preparation for “POCKET SAILOR” Software Installation | 4 |
| Installation of Microsoft ActiveSync 3.x Software | 4 |
| Installation of Tsunamis Navigator Software | 7 |
| Installation of “Pocket Sailor” Software | 7 |
| Deleting of “Pocket Sailor” Software | 10 |
| Warnings | 10 |

INTRODUCTION

The dedicated software developed by Transas allows the use of Pocket PC class pocket computers (PDA) by Compaq, Casio, HP, etc. for the operation with "POCKET SAILOR" electronic chart system (PS in what follows). Loading of ECS software is performed by using any "big" IBM PC class computer whose technical characteristics would allow installation of "TSUNAMIS NAVIGATOR" electronic chart system (TSN in what follows).

SYSTEM REQUIREMENTS

- IBM PC class personal computer with the following software installed:
 - Tsunamis Navigator ECS (WF16 or later);
 - Microsoft ActiveSync 3.1 software for Pocket PC 2000;
 - Microsoft ActiveSync 3.5 software for Pocket PC 2002.
- Pocket PC class min-computer with the following system requirements:
 - OS Pocket PC 2000 or Pocket PC 2002;
 - At least 32Mb RAM.

ATTENTION!

There is no warranty of Pocket Sailor chart system operation unless with Pocket PC 2002 software installed on a PDA.

Pocket Sailor chart system is required to be re-installed in case of a complete discharge of PDA accumulator battery.

If Pocket PC 2000 software is installed on your PDA, after the third full discharge of the accumulator battery Pocket Sailor chart system will not operate any more.

PREPARATION FOR "POCKET SAILOR" SOFTWARE INSTALLATION

At the initial stage, it is necessary to make settings for the additional software.

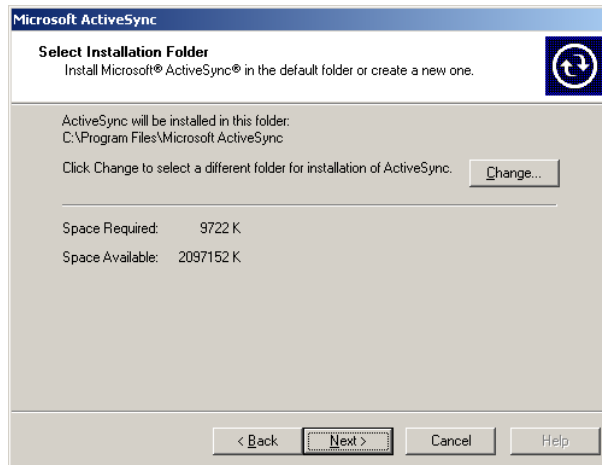
Installation of Microsoft ActiveSync 3.x Software

Use the CD enclosed with the POCKET PC to install Microsoft ActiveSync 3.x program on a personal computer. This program will ensure a link between the standard computer and POCKET PC. Installation is carried out by using the following procedure:

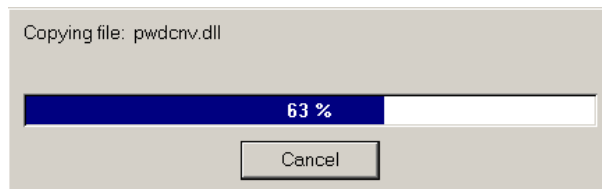
1. Insert the disk containing Microsoft ActiveSync 3.x installation in the CD drive.
Run the installation.
2. Press "Next" button



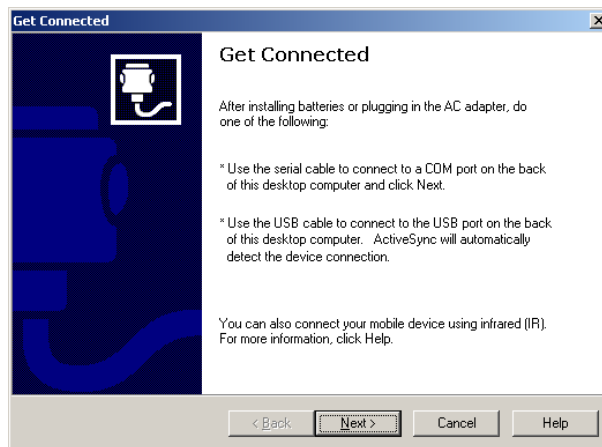
3. Press “Next” button



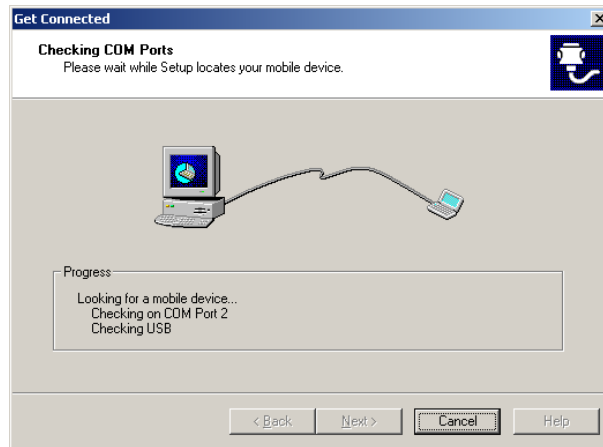
4. Installation procedure is in progress



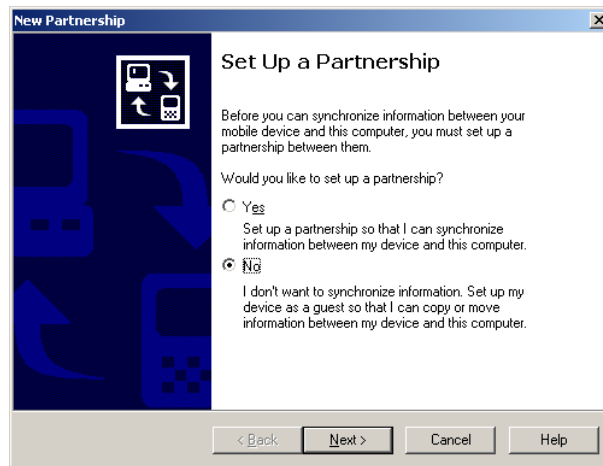
5. Connect the POCKET PC base to a standard computer by using a special cable enclosed with the POCKET PC. Connection is via USB port (if USB port is not available, connection can be made via COM port). Put the POCKET PC itself on the base and turn it on. Press “Next” button



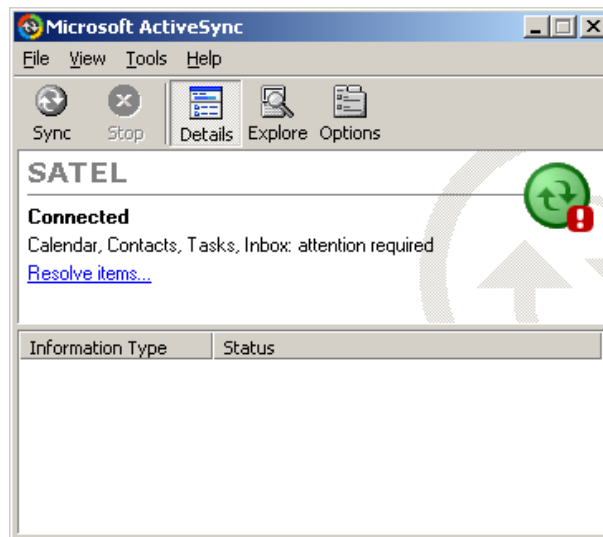
6. There is a search for the mobile unit (POCKET PC)



7. Select "No" option. Press "Next" button



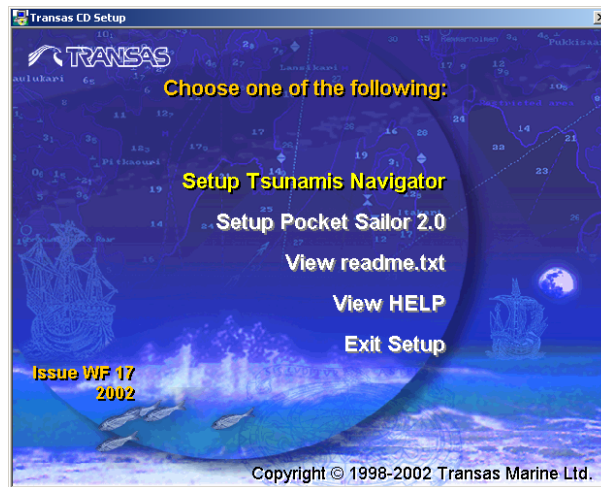
8. Synchronising with the POCKET PC is completed.



At this step, installation of Microsoft ActiveSync and synchronising with the POCKET PC are completed.

Installation of Tsunamis Navigator Software

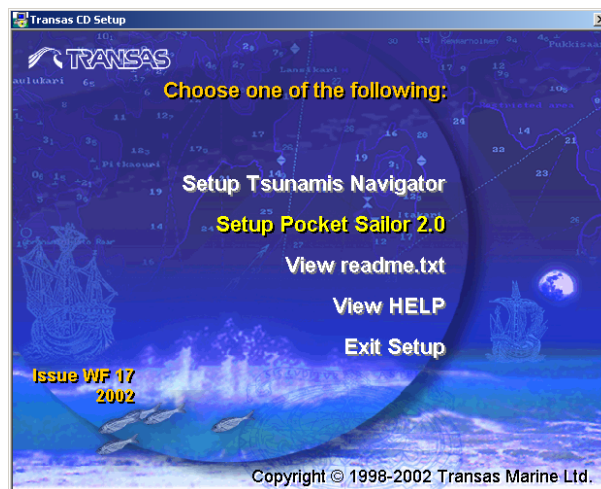
1. Insert "Transas Tsunamis Navigator WF 16" CD or higher into the CD drive.



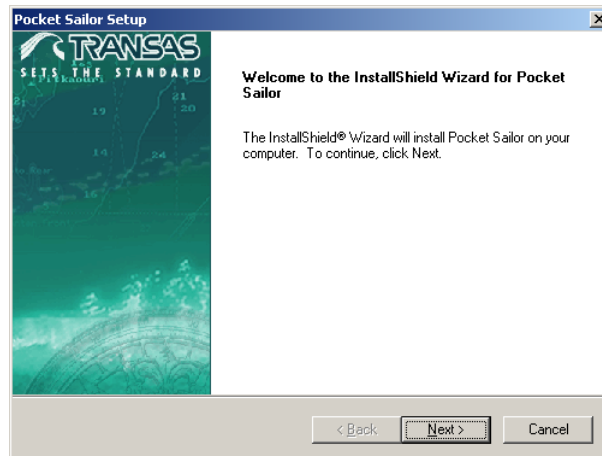
2. Install Tsunamis Navigator ECS on the desktop/laptop computer from the disk (see Tsunamis Navigator Software Installation Manual, run via View HELP line).

INSTALLATION OF "POCKET SAILOR" SOFTWARE

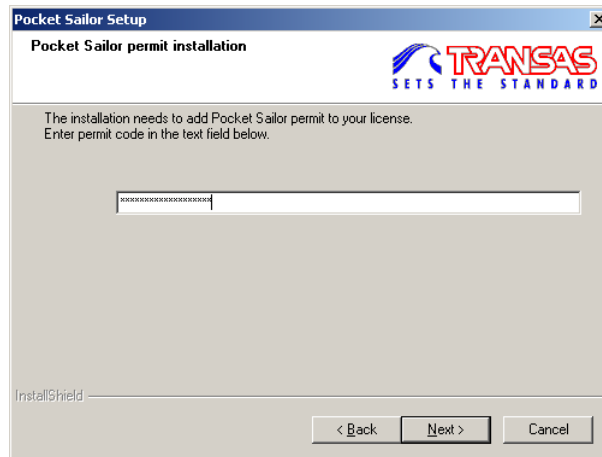
1. Insert "Transas Tsunamis Navigator WF 16" disk or higher into the CD drive. Select Setup Pocket Sailor 2.x line or run the installation along the following path: <CD> drive:\PkSail\Setup.exe. As this is done, the POCKET PC should be connected to the "big" computer and turned on.



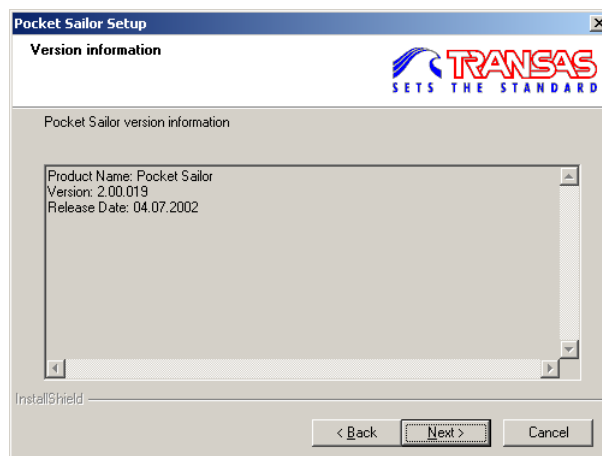
2. Press "Next" button



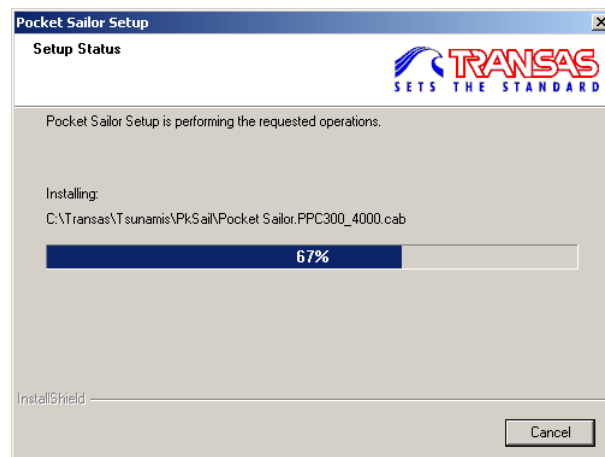
3. Enter the PIN code. The code is specified on a special PERMIT CODES form along with the chart permits, which is handed to the customer at the time when the system is bought. The code is on the line called PKSAIL. Press "Next" button



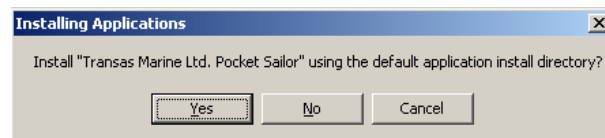
4. Press "Next" button



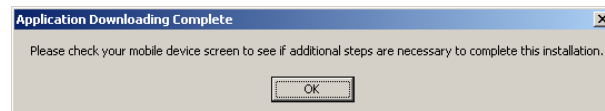
5. Installation process is underway.



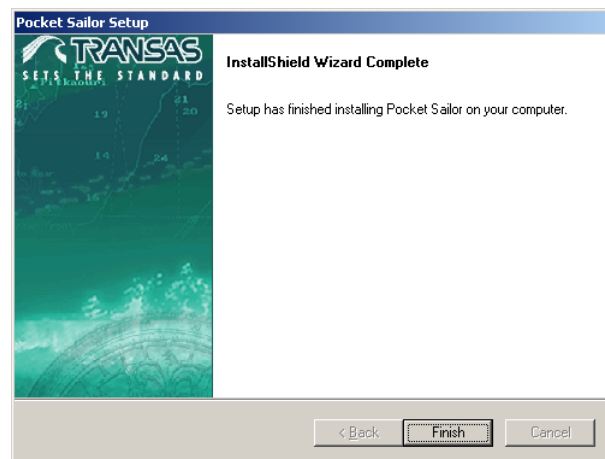
6. Press "Next" button



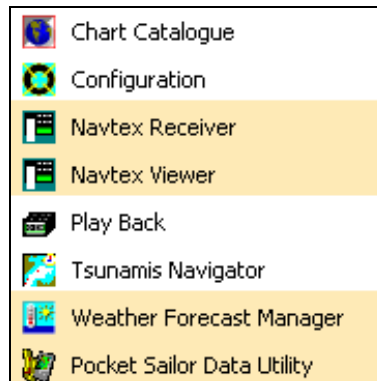
7. Press "OK" button



8. Press "Finish" button



9. Check that the installation has been performed successfully. To do this:
 - Check that the Start Menu of the “big” computer contains “Pocket Sailor Data Utility” icon in the group of utilities of the installed Tsunamis Navigator system.



- Run “Pocket Sailor Data Utility” and check that its link with the POCKET PC has been established.
- Run “Pocket Sailor 2.x” program on the POCKET PC and check that it functions properly.

DELETING OF “POCKET SAILOR” SOFTWARE

To delete “Pocket Sailor 2.x” software, use the following procedure:

1. On the base station of Tsunamis Navigator, use “Add or Remove Programs” function of Windows OS and delete “Pocket Sailor” program.
2. Use cold restart on the POCKET PC.
3. Use **Start\Settings\Remove Programs** function in the POCKET PC and delete “Pocket Sailor 2.x”. “Pocket Sailor” folder is deleted manually in the POCKET PC (By default, it is stored in the Pocket PC with the following paths: *Program Files\Pocket Sailor* and *My Documents\Pocket Sailor*)

WARNINGS

1. The licensing agreement implies simultaneous use of the installed chart collection on one navigational plotter only. This may be:
 - Tsunamis Navigator Standard/Pro or;
 - One Pocket PC with installed Pocket Sailor software.
2. It should be noted that the POCKET PC operating speed and, accordingly, that of the installed “Pocket Sailor 2.x”, is in direct proportion to the free memory in the POCKET PC, number of loaded charts and accumulator battery charge.