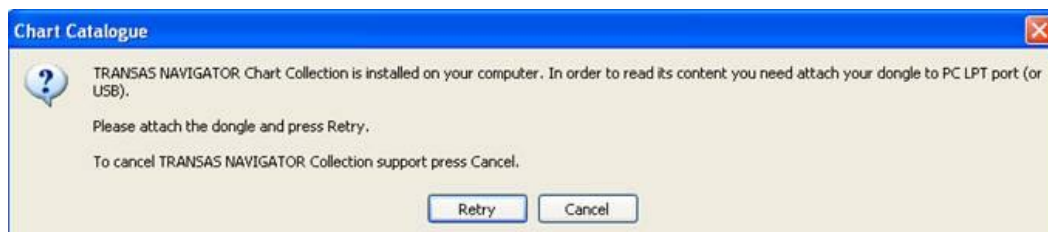


How to define required chart without the dongle

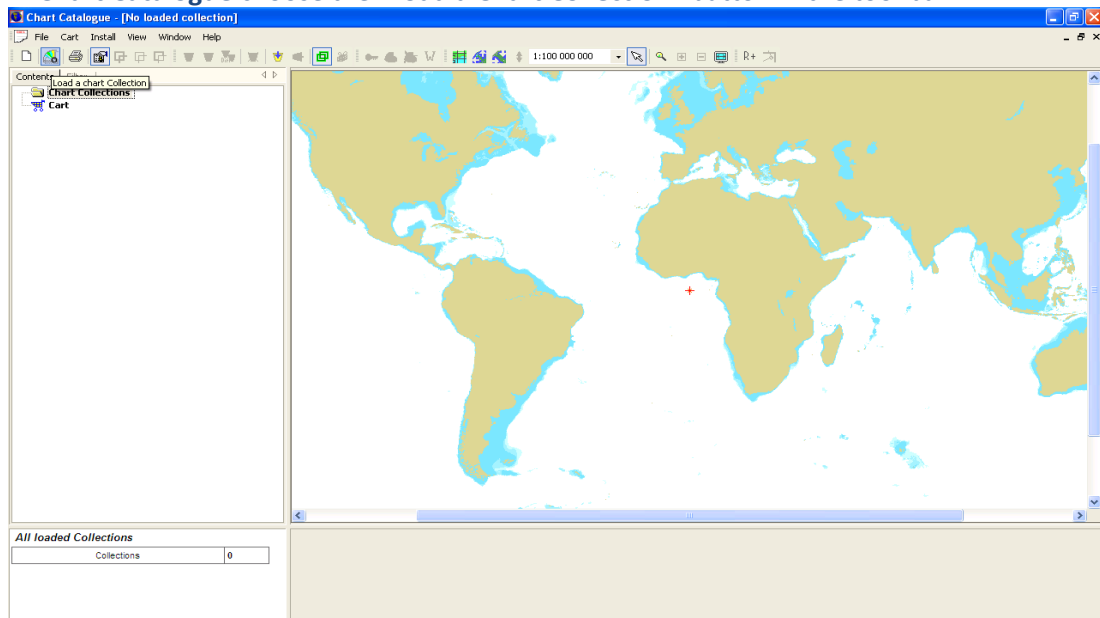
After the downloading latest version of [TRANSAS Navigator](http://www.transasnavigator.com/downloads/navigator/) from the <http://www.transasnavigator.com/downloads/navigator/> you should do the following actions:

1. Download the [WF XX.CLL.GZ](http://www.transasnavigator.com/downloads/releaseinformation/WF_XX.CLL.GZ) file from the <http://www.transasnavigator.com/downloads/releaseinformation/>
2. Start the **Chart Catalogue** application of **TRANSAS Navigator** package Start\Programs\TRANSAS Navigator\Chart Catalogue

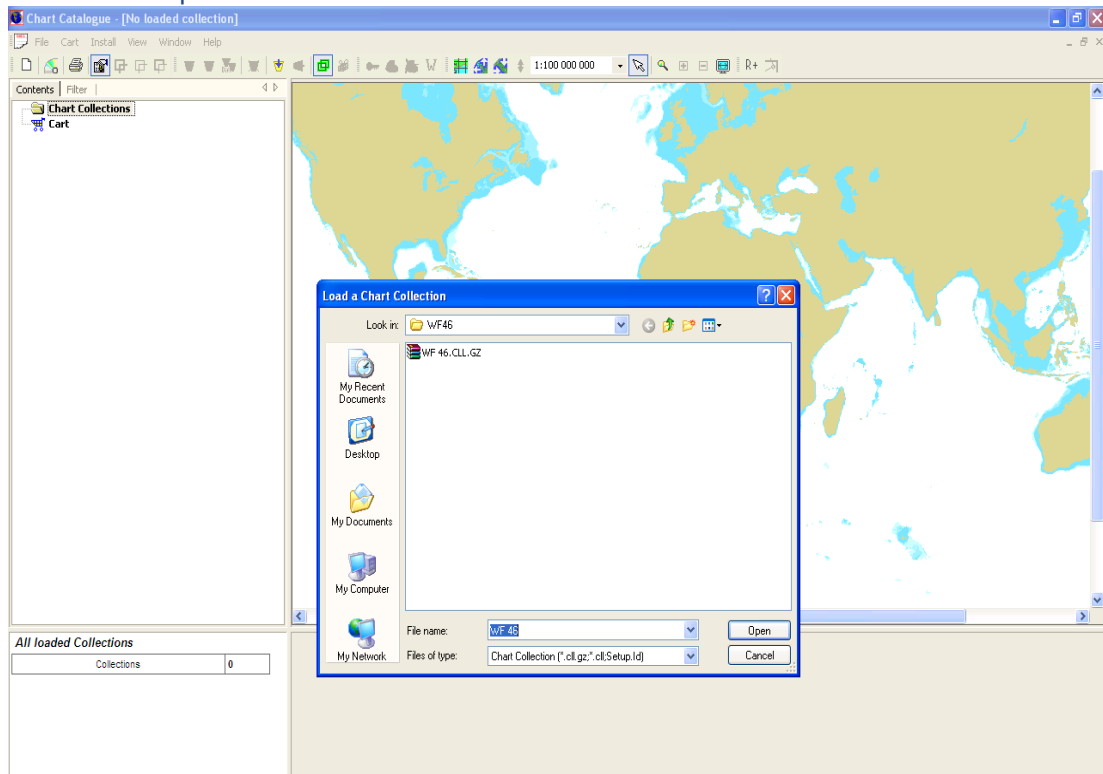


Press "Cancel" after the dialog box appears

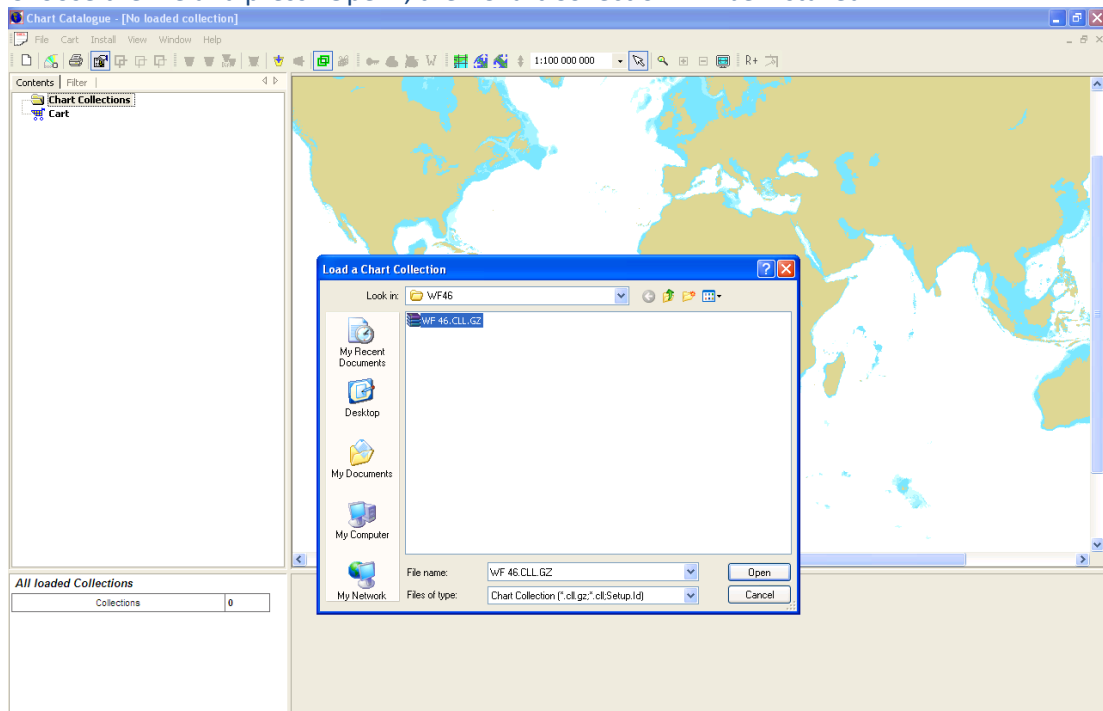
3. In **Chart Catalogue** choose the "Load a Chart Collection" button in the tool bar



4. Press the “Load a Chart Collection” button and choose the location of the saved “WFxx.CLL.GZ” file in the computer



5. Choose the file and press “Open”, then Chart Collection will be installed



6. Choose the necessary charts and folios.

Transas Marine limited

10 Eastgate Avenue, Eastgate Business Park, Little Island, Cork, Ireland,
Phone: +353 (0) 21 471 0400 - Fax: +353 (0) 21 471 0410 - Web: www.transas.com