

Instruction for proper work of TRANSAS Navigator with Windows 7 OS

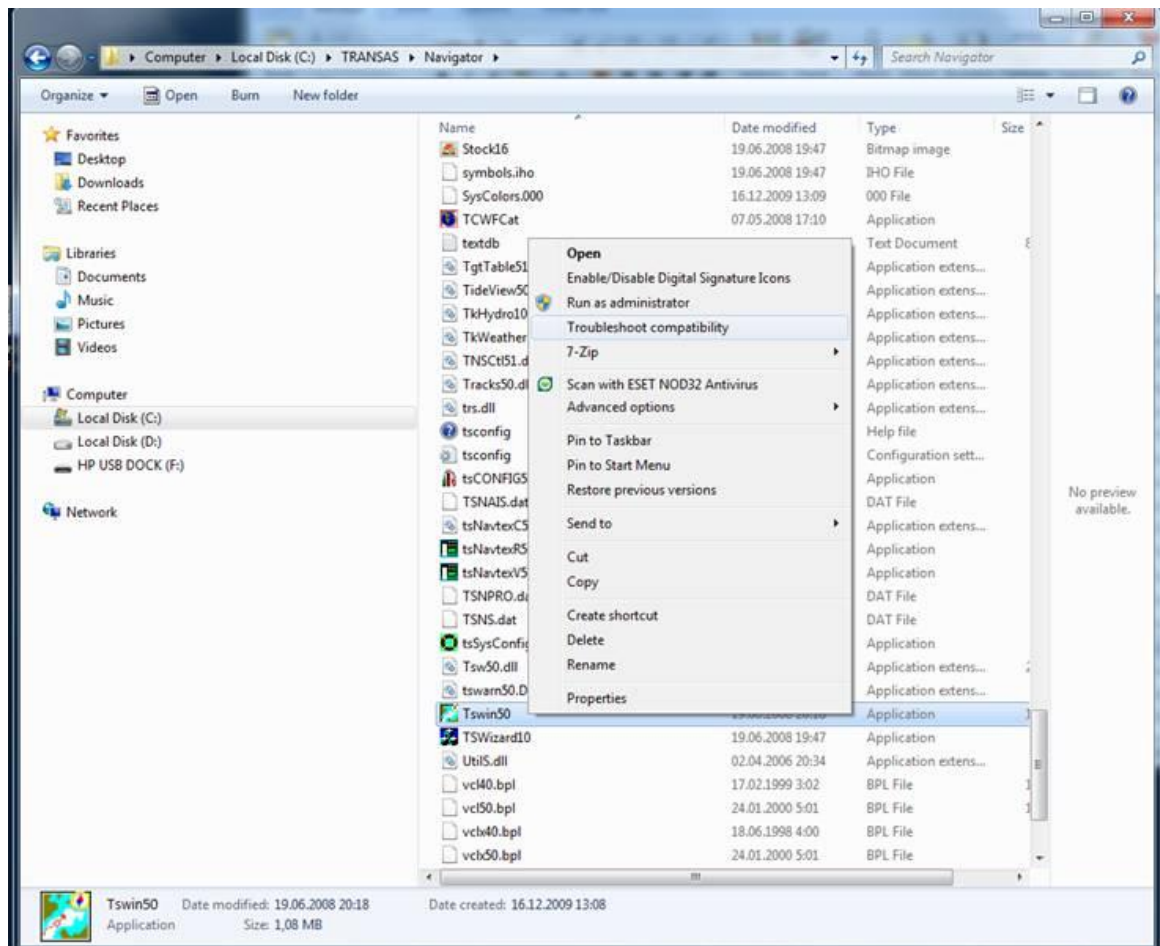
1. Install **TRANSAS Navigator** latest version from downloads area of website <http://www.transasnavigator.com/downloads/navigator/>

Please, follow the InstallShield's instructions carefully during the installation.

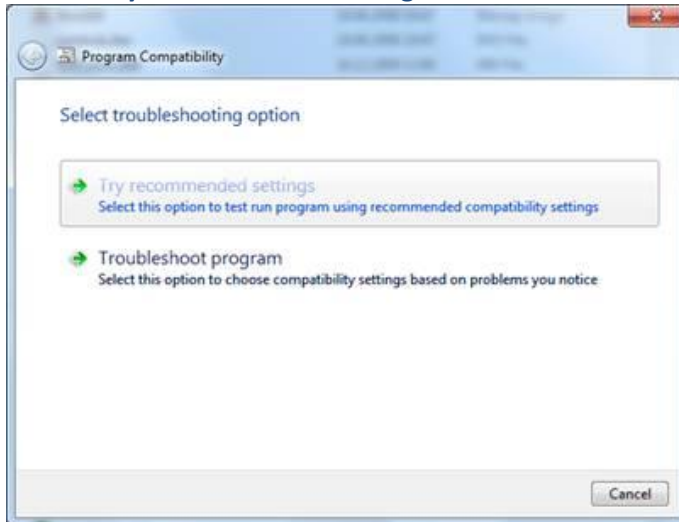
Where USB dongles are used with the TRANSAS Navigator program, the following principal rules should be observed:

1. The USB dongle should not be connected until after the software installation and computer restart.
It should be connected only when the computer's operational system is running normally.
2. Check the correctness of the USB dongle installation. Dongle must be insert against stop in USB port, at that on the dongle must glow a green colour indicator, showing the correct USB dongle installation.

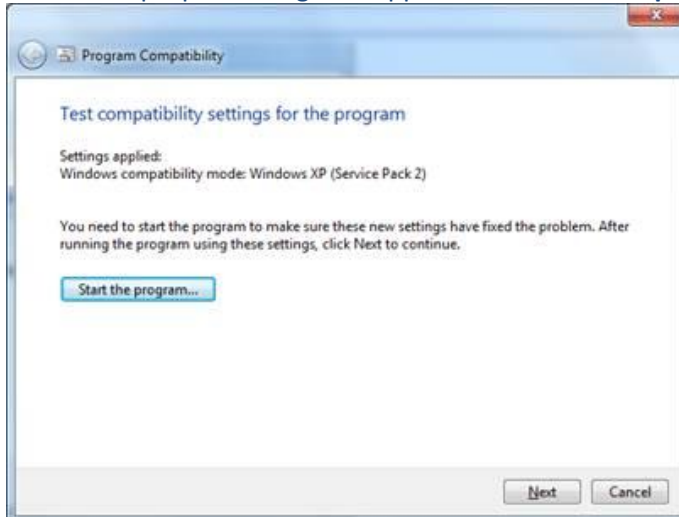
2. Restart PC
3. Press right mouse button on file **Tswin50.exe** and choose **Troubleshoot Compatibility**



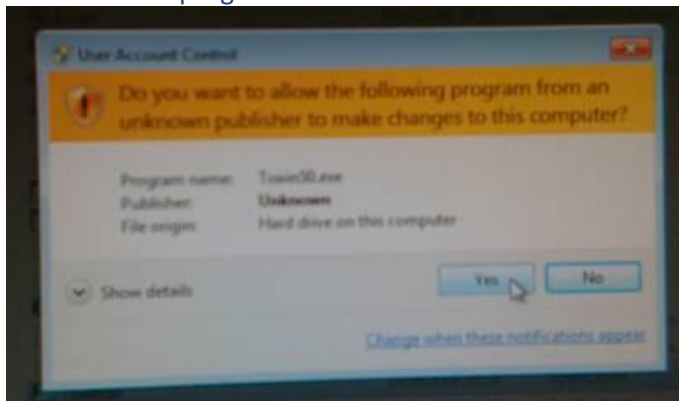
4. Choose Try recommended settings



5. Check that proper settings are applied - Windows compatibility mode Windows XP (Service Pack 2)



6. Push start the program and confirm access:



7. Enter your **Permits** for **TRANSAS Navigator** options and **TRANSAS TX-97 Charts**

8. Check the proper operation of **TRANSAS Navigator**