

TRANSAS NAVIGATOR

OS WINDOWS 10 INSTALLATION INSTRUCTION

Date: 06.08.2015

TRANSAS

TRANSAS NAVIGATOR SW. OS WINDOWS 10 INSTRUCTION

“Transas Navigator” software, NSP31 release and its compatibility with the **Windows 10** operational system.

“Transas Navigator” software was tested under following operational systems: **Windows 10 Professional 32 bit** (English) with the LPT dongle and **Windows 10 Home Edition 64 bit** (English) with LPT and USB dongles.

This article describes the proper installation of the “Transas Navigator” software on PC with the Windows 10 English, but similar action should be performed for any similar localized version of the Win 8 OS (German, Spanish, etc.).

Installation Warning

Where **USB & LPT** dongles are used with the Transas Navigator program, the following principal rules should be observed:

1. The **USB or LPT** dongle should not be connected until after the software installation and computer restart. It should be connected only when the computer's operational system is running normally.
2. Please, restart computer after installation of the Transas Navigator program and connect your **USB or LPT** dongle after that.
3. Check the correctness of the **USB** dongle installation. Dongle must be insert against stop in **USB** port, at that on the dongle must glow a green color indicator, showing the correct **USB** dongle installation.

Installation Procedure

1. Copy “Transas Navigator” installation on your PC drive:

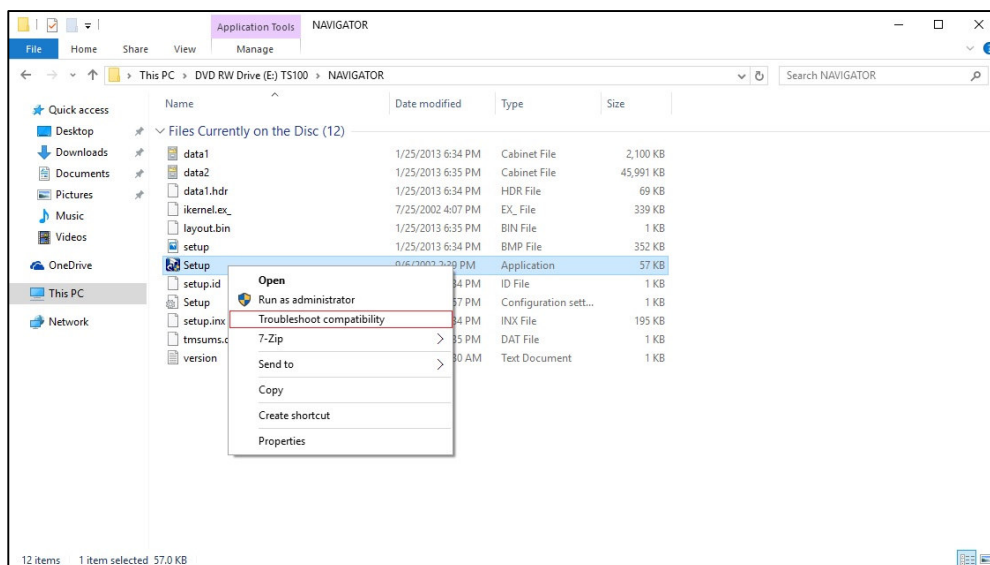
Transas Navigator

Software Installation v. 1.03.03, b. 5463

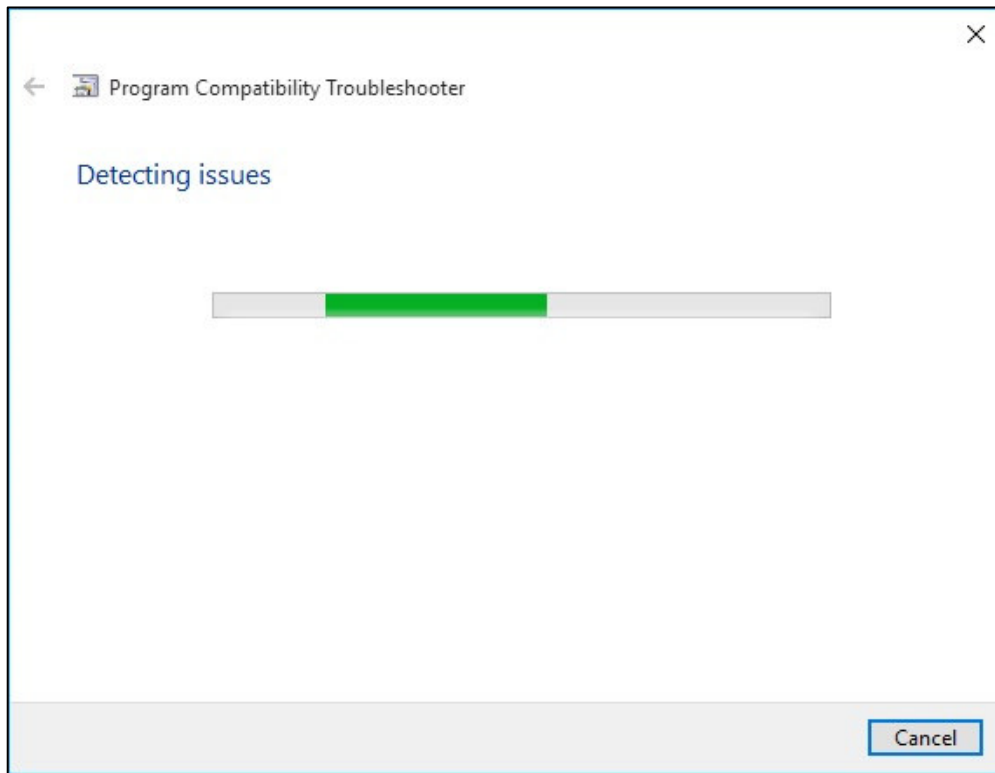
with Chart Catalogue ver.4.05.065

47 Mb, EXE

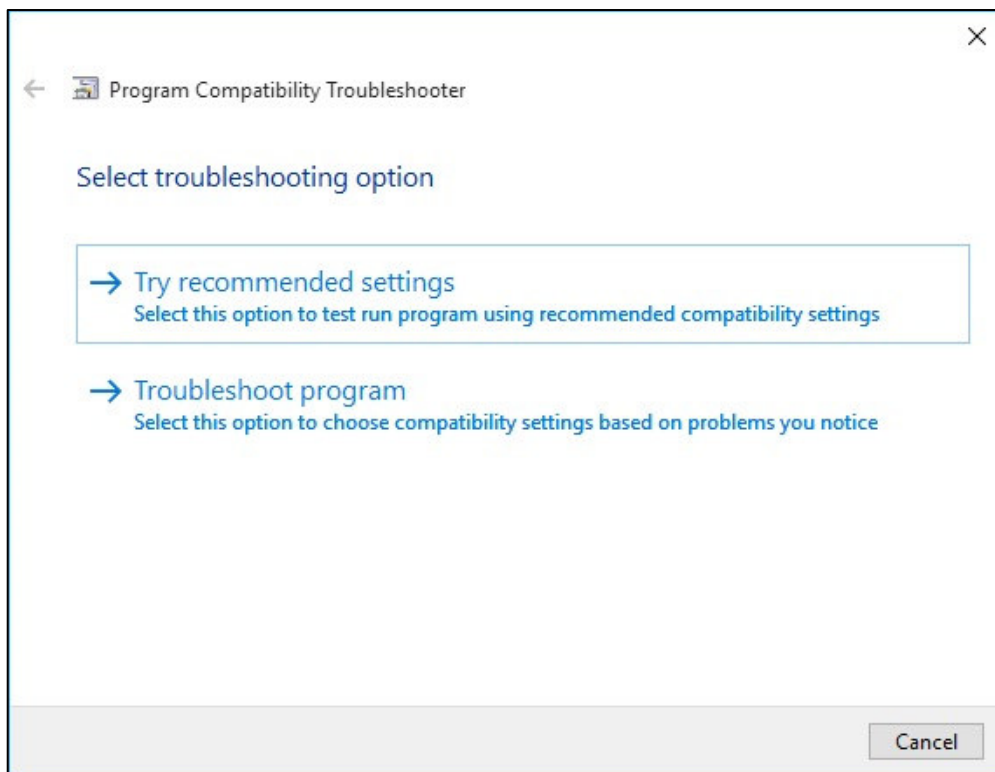
2. Right click on a program “**Setup.exe**” file and click/tap on “**Troubleshoot compatibility**” item:



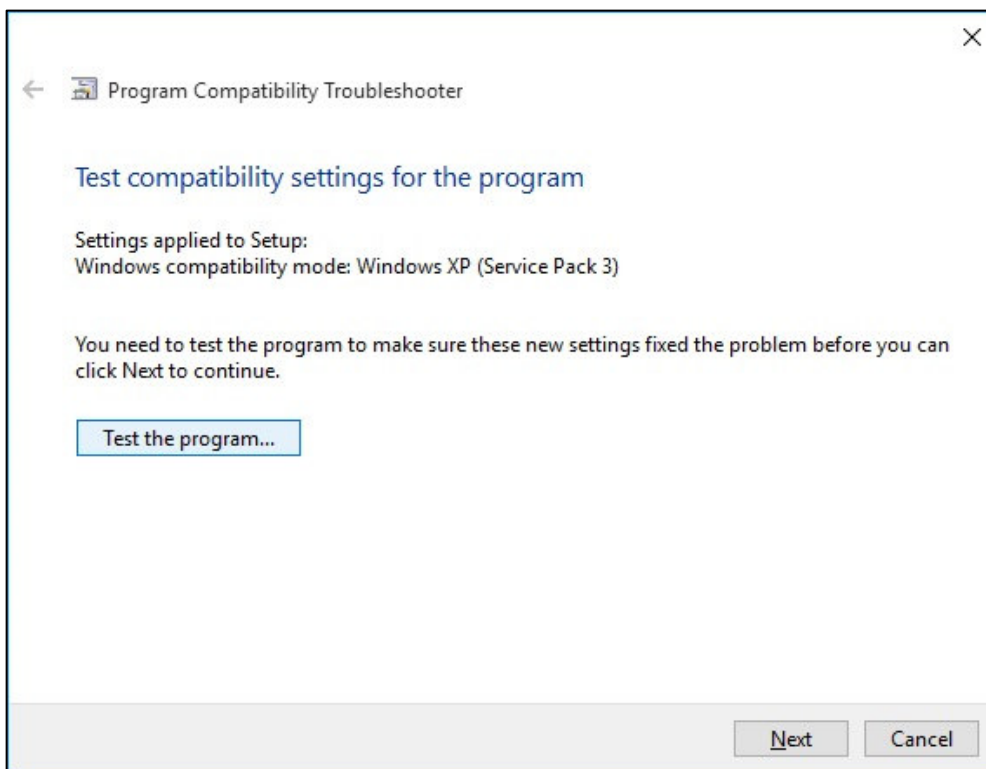
3. Wait, while Windows is trying to detect the compatibility problem:



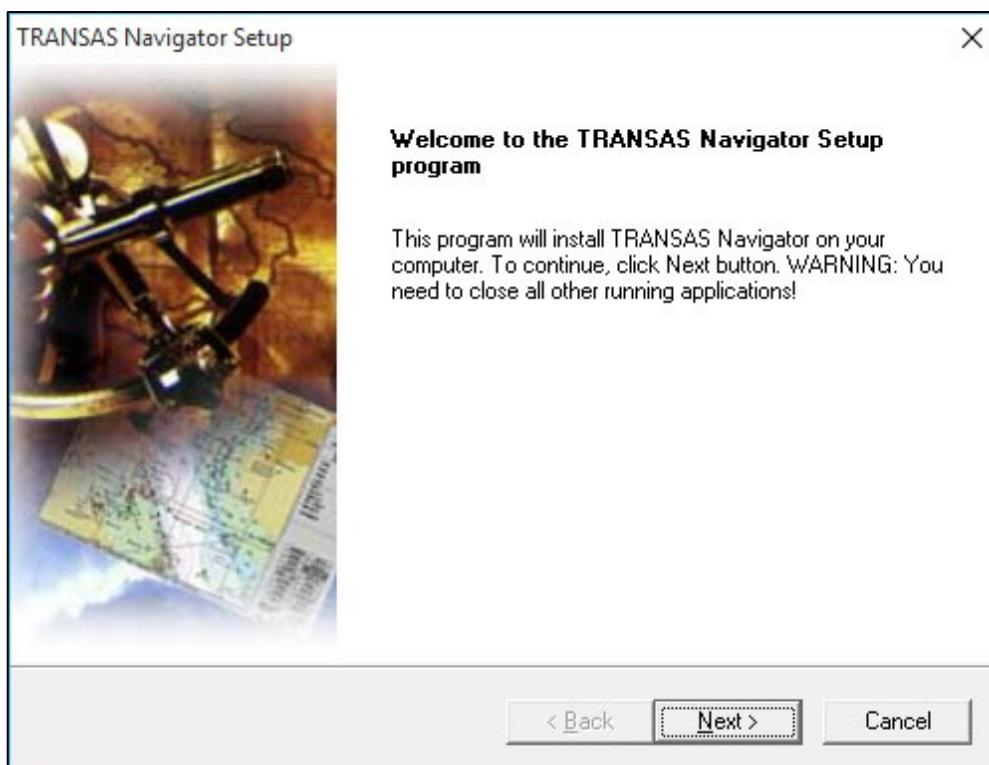
4. Select and press the “**Try recommended settings**” button on the next page:



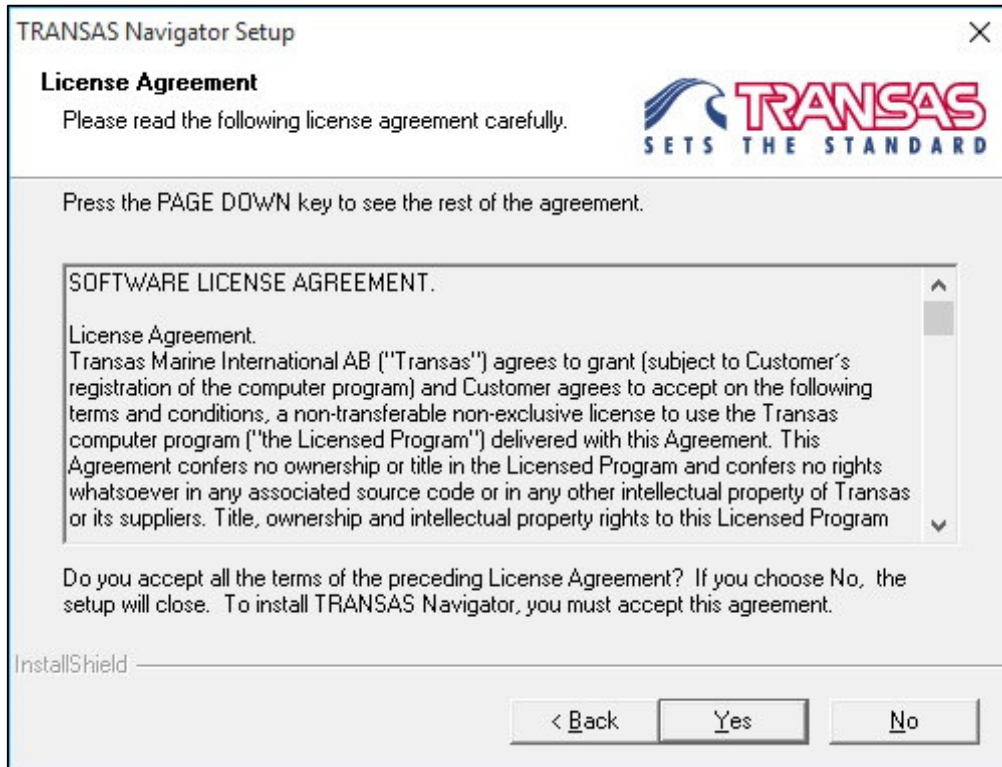
5. Compatibility parameters will be detected for the “**Transas Navigator**” software (*it could be Win XP SP3 as on the example below*). Press the “**Test the program...**” button and the standard installation of the “**Transas Navigator**” software will be activated after that.



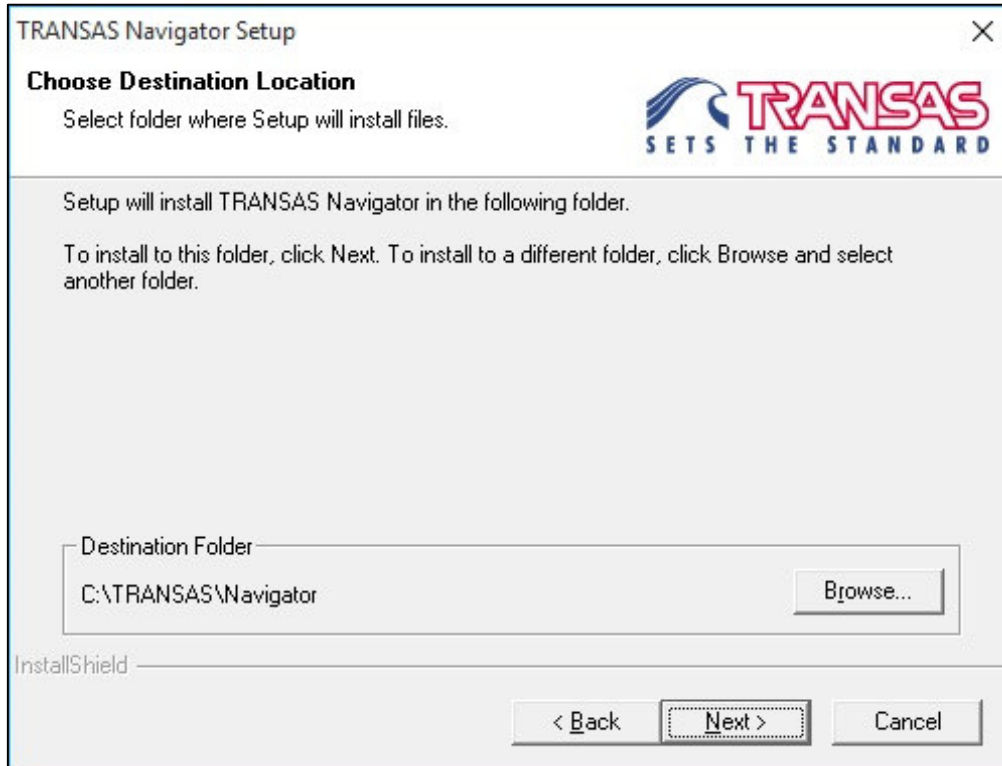
Press “**Next**” button:



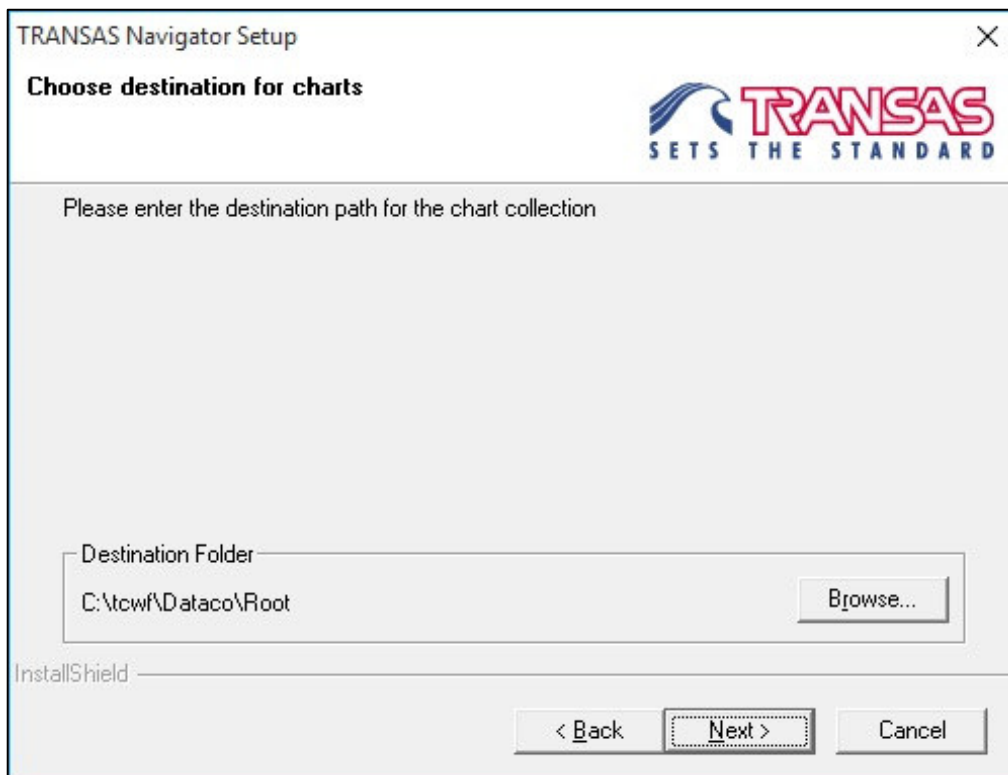
Press “Yes” button:



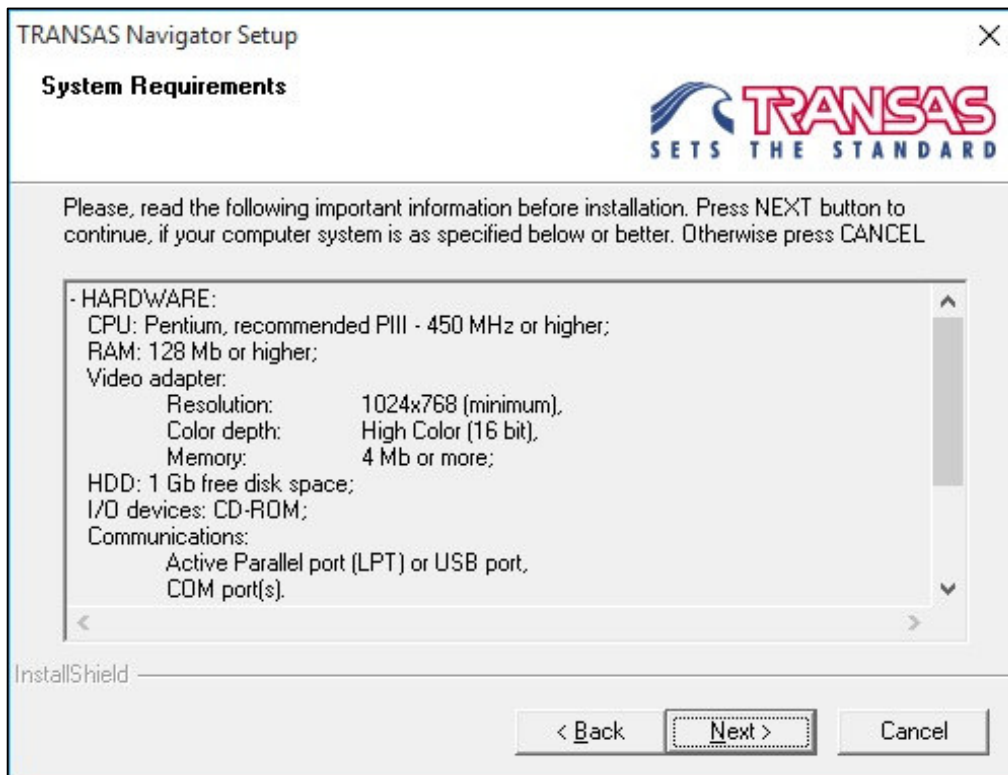
Press “Next” button (default Destination folder is strongly recommended):



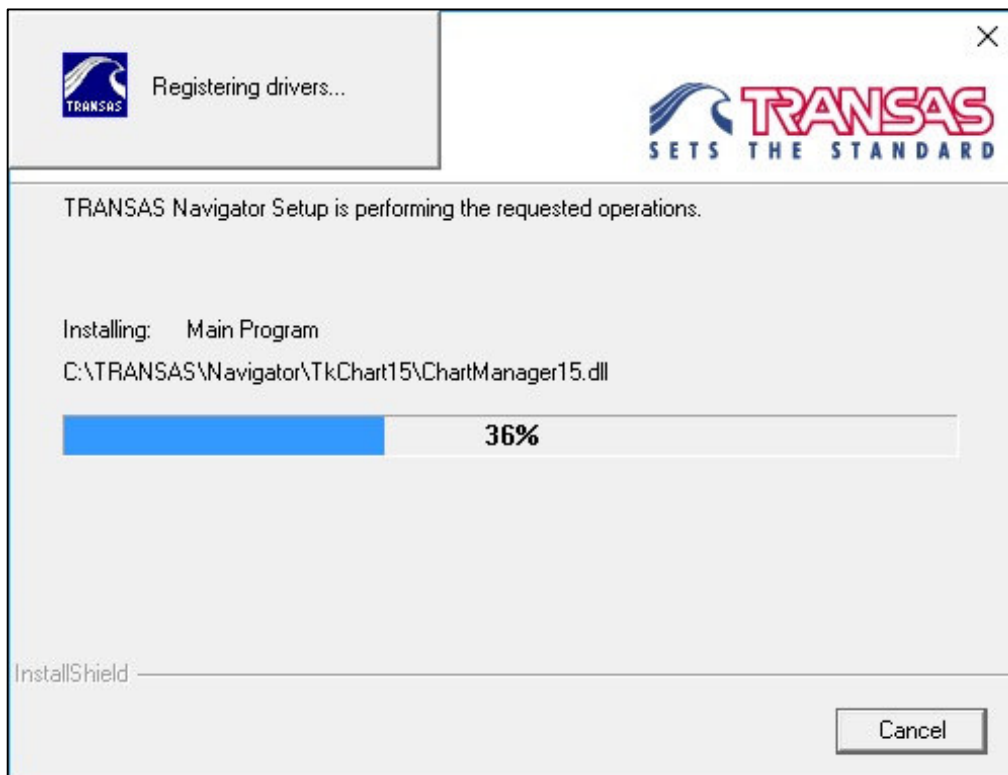
Press “Next” button (default Destination folder is strongly recommended):



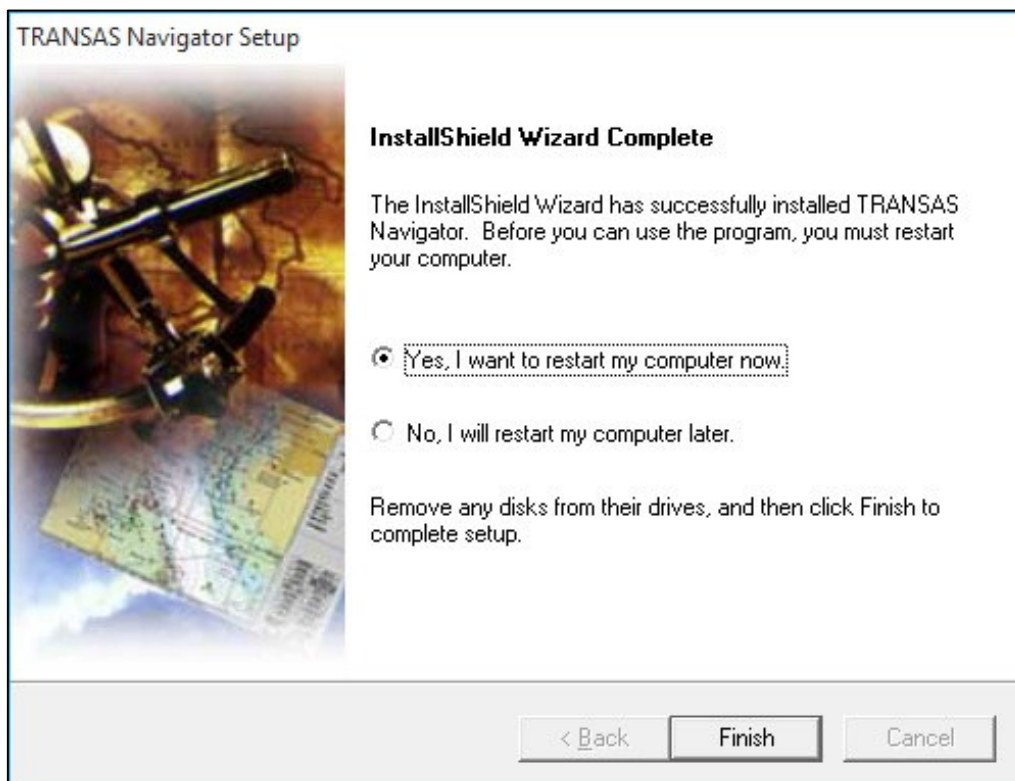
Press “Next” button:



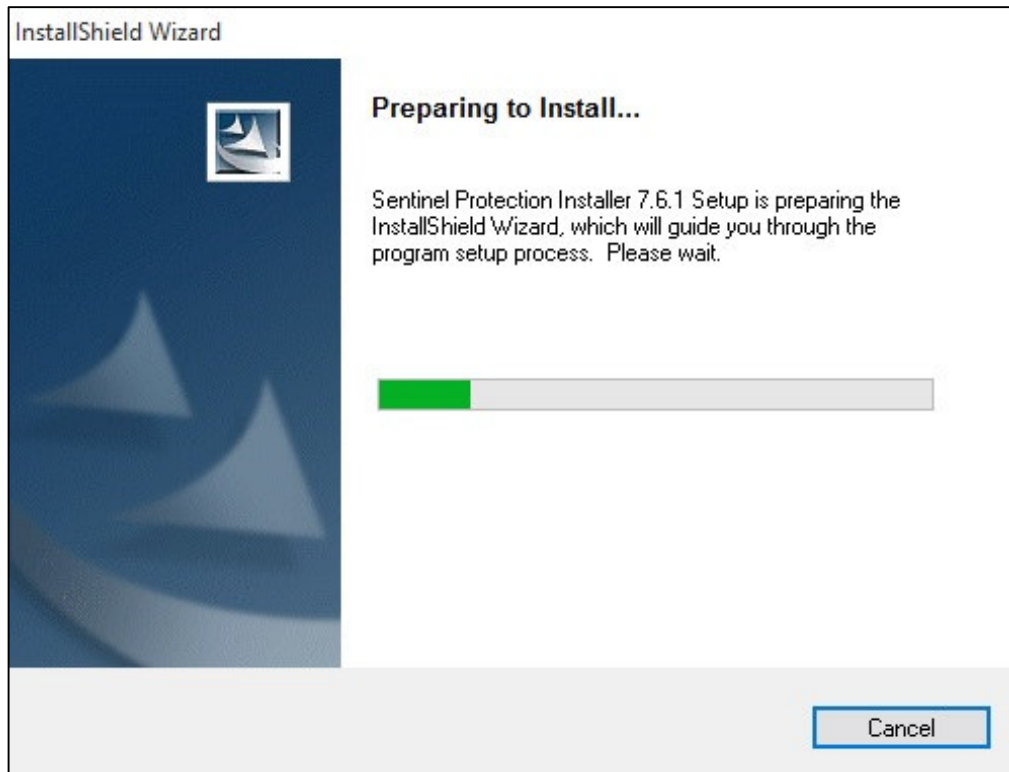
6. Perform the standard “Transas Navigator” installation:



7. Press “**Finish**” button and **Restart PC** at the end:



8. **Sentinel Protection Installer** (Sentinel drivers, Version 7.6.1) will be launched automatically after loading of the Windows 10 OS. Please wait:



9. Connect your Transas Navigator USB or LPT dongle to the USB or LPT slot accordingly. Dongle will be recognized in a few seconds.
10. Run the “**Transas Navigator**” software and check its operation.